

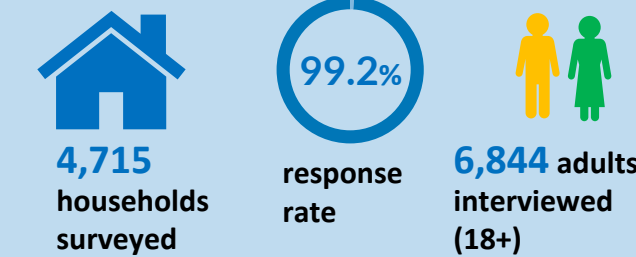
INTRODUCTION:

This infographic summarizes key findings from the 2025 Tanzania Gender and Environment Survey (TGES), illustrating how gender, location, and socio economic context shape people's interactions with the environment across Mainland Tanzania. The results highlight high dependence on natural resources, widespread environmental stress, and low adoption of conservation practices, alongside persistent gender inequalities in unpaid care responsibilities, exposure to climate-related risks, and decision making power. Together, the findings provide a strong evidence base for strengthening gender responsive planning, policymaking, resource

governance, and climate adaptation measures at both national and sub national levels.

The 2025 TGES was implemented by the National Bureau of Statistics (NBS) in close collaboration with the Vice President's Office (VPO), the Ministry of Community Development, Gender, Women, and Special Groups (MoCDGWSGs), other government ministries, non-state actors, as well as research and academic institutions. UN Women provided technical support while the Government of the United Republic of Tanzania fully financed the survey through the Tanzania Statistical Master Plan II (TMSP II) fund.

SURVEY COVERAGE



Six zones in Mainland Tanzania:



Arid Lands – Areas characterized by very low rainfall, high evaporation, and recurrent water scarcity, with frequent and prolonged drought conditions.



Semi-Arid Lands – Areas with low and highly variable rainfall, making them particularly vulnerable to drought, crop failure, and land degradation.



Alluvial Plains – Low-lying areas formed by river deposits, generally featuring fertile soils and supporting agriculture, but often exposed to seasonal flooding.



Coastal Zone – Low-elevation areas along the coastline, typically marked by high humidity, saline influences, and exposure to flooding and coastal erosion.



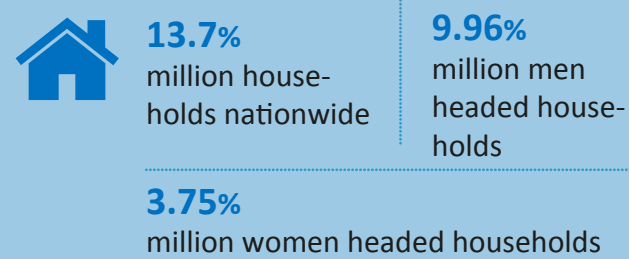
Highlands – Higher-altitude areas with cooler temperatures and relatively higher and more reliable rainfall compared to lowland zones.



Plateaux – Broad, flat or gently undulating elevated areas with moderate rainfall and mixed agricultural potential, depending on soils and water availability.

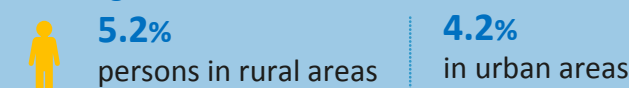
KEY FINDINGS

Demographic Profile Household Demographics

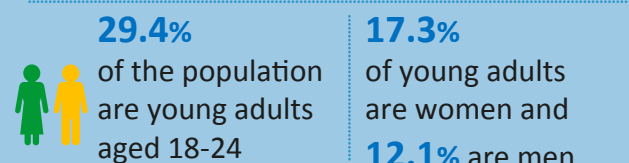


1/4 Women head more than 1 in 4 households, often with fewer assets and lower access to services, increasing vulnerability to environmental and climate shocks.

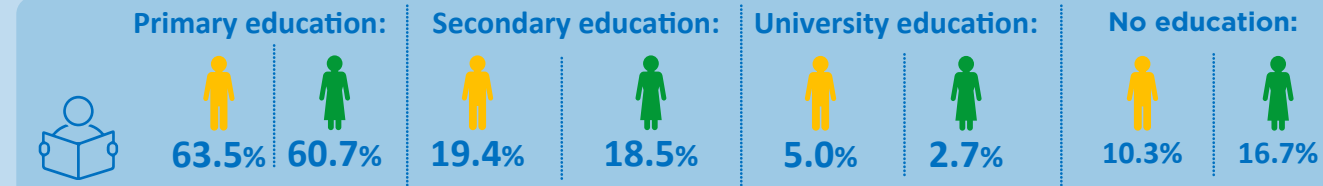
Among men-headed households:



Among women-headed households:



Education



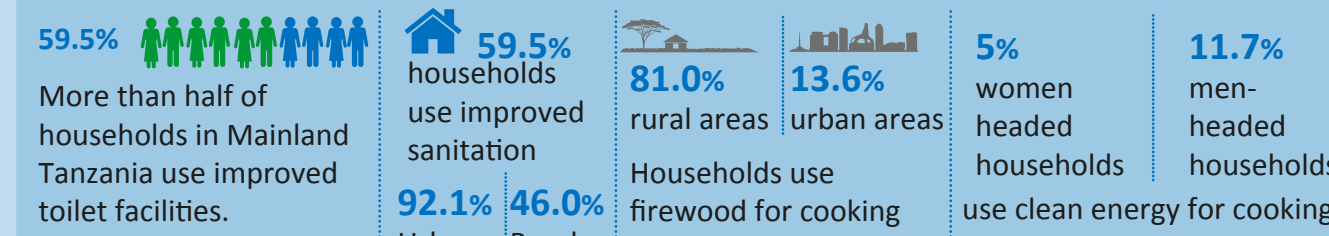
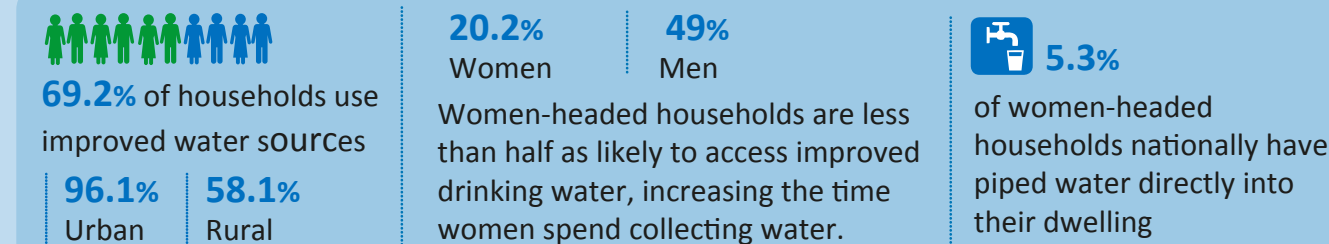
In Arid Lands, women have the weakest education outcomes:



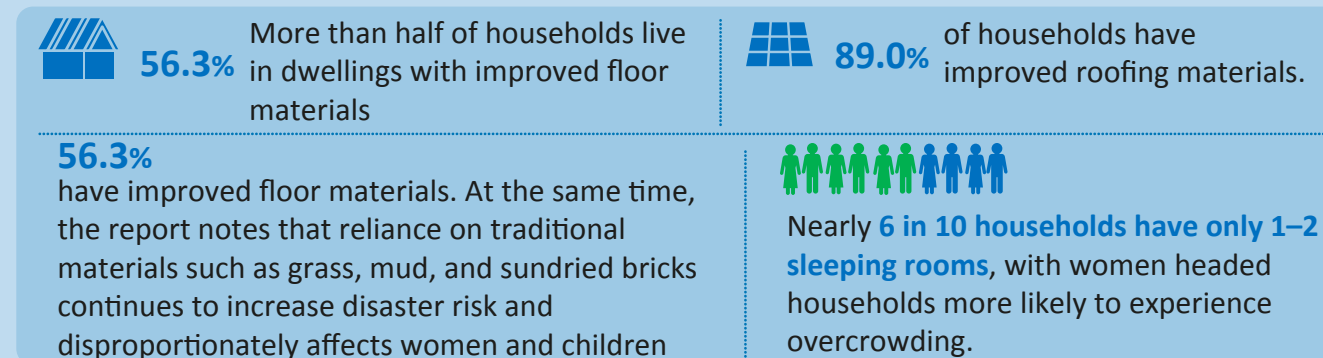
Disability and Inequality



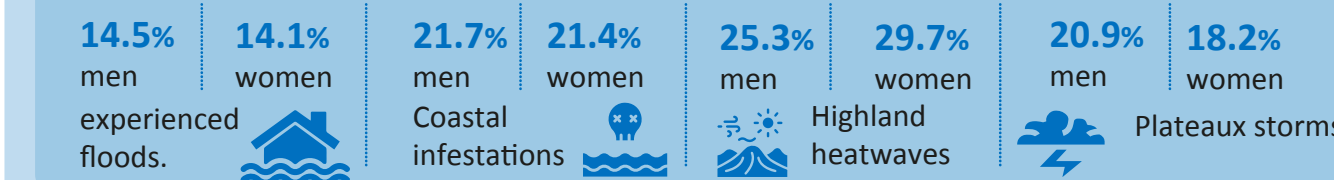
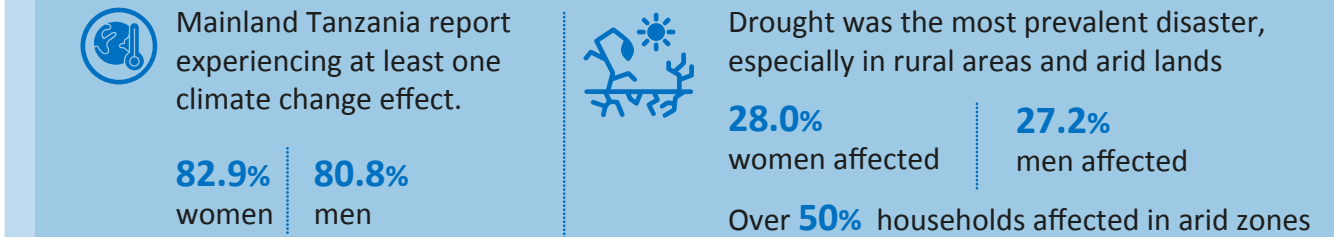
WATER, SANITATION AND ENERGY



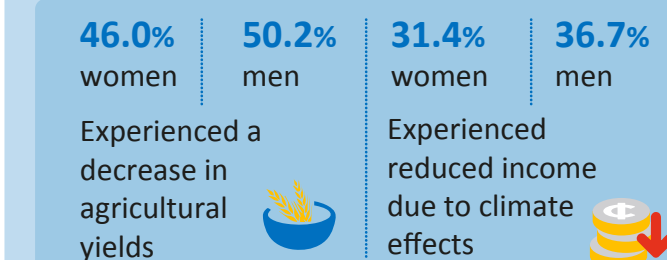
HOUSING CONDITIONS



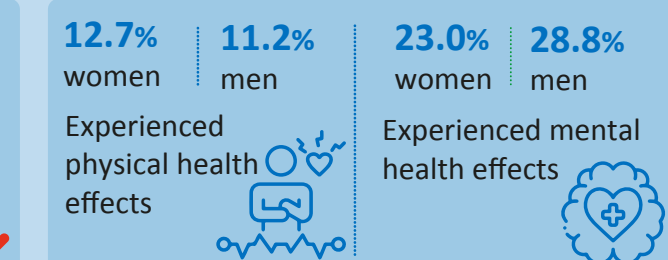
CLIMATE CHANGE EFFECTS



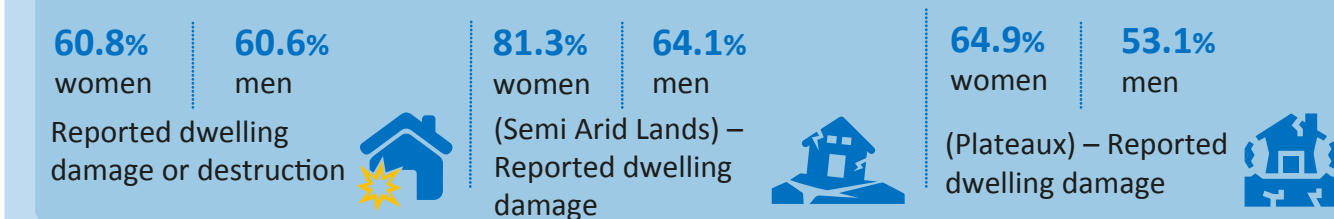
Agriculture & Food Security



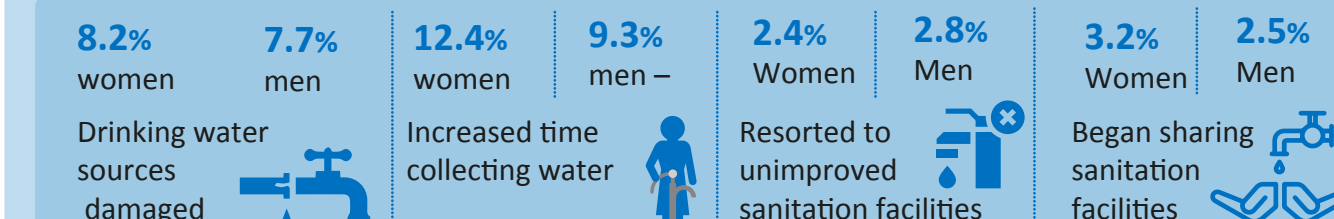
Health Impacts



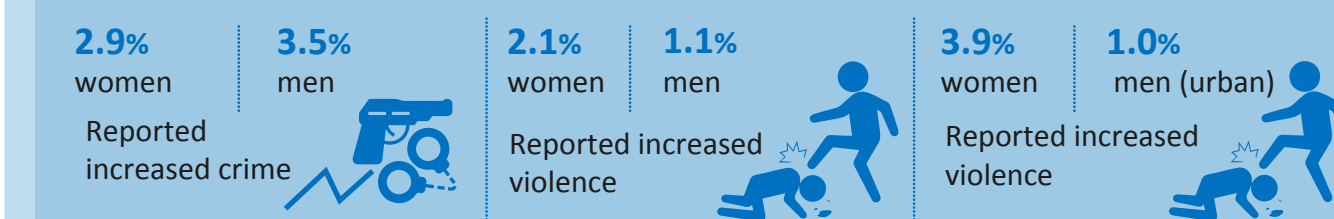
Housing Damage



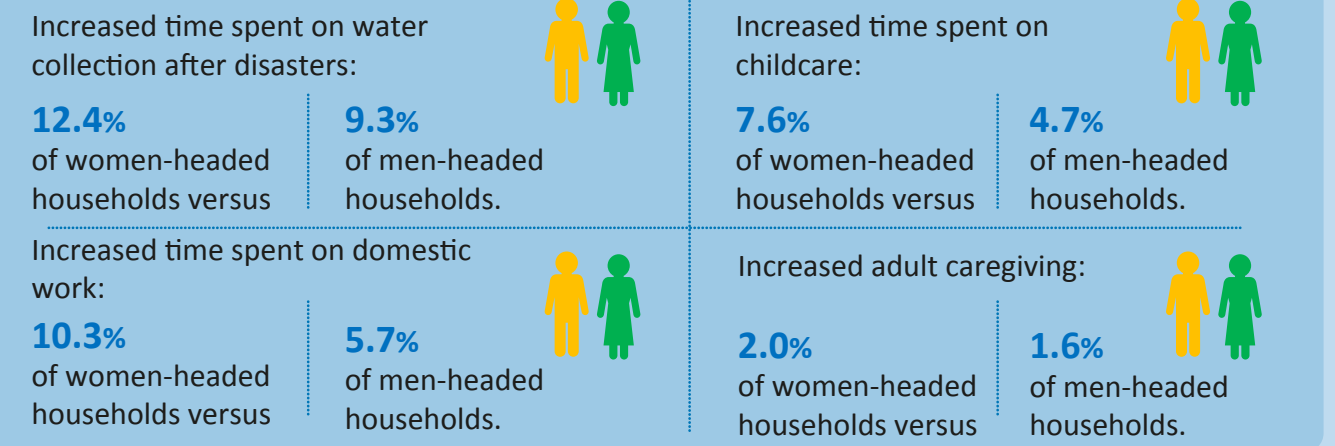
Water & Sanitation



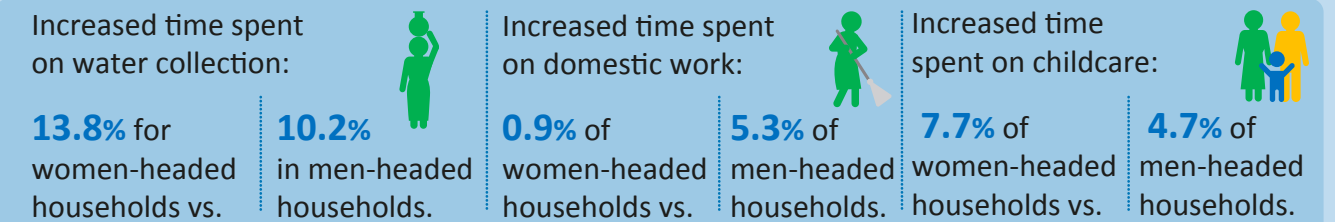
Crime, Safety & Social Impacts



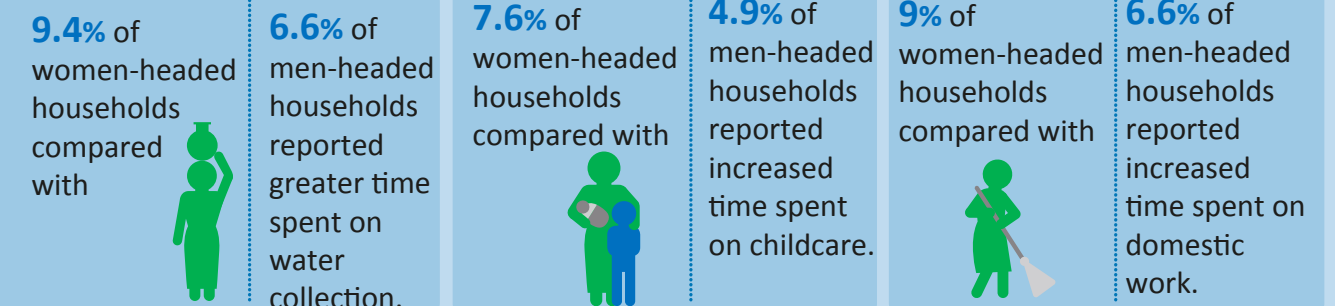
Impacts on Unpaid Care and Domestic Work



Rural areas showed the largest differences by household headship



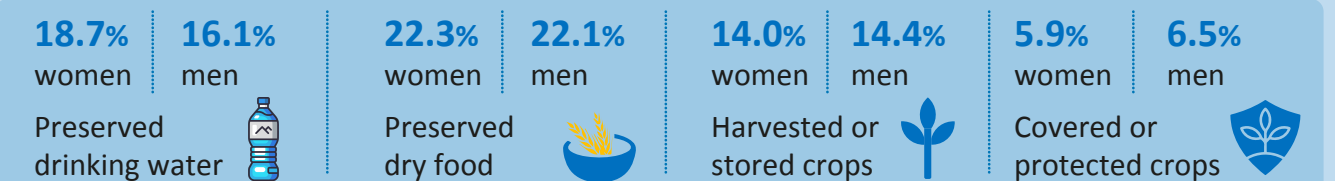
In urban areas:



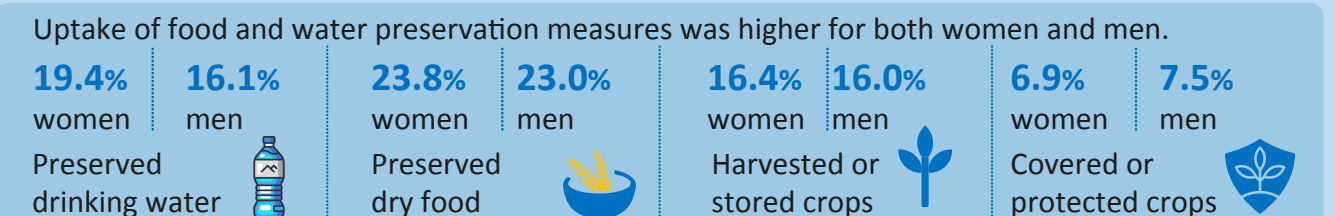
Food and Water Preservation

Precautionary actions taken to protect food and water resources after receiving early warning information on potential hazards such as floods and droughts.

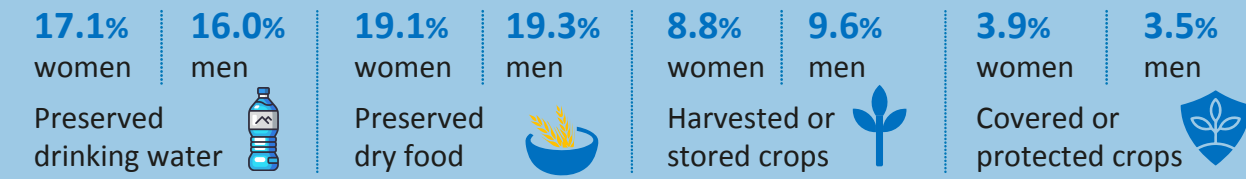
Mainland Tanzania



Rural Areas



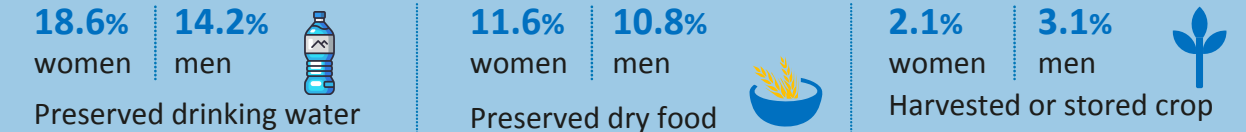
Urban Areas



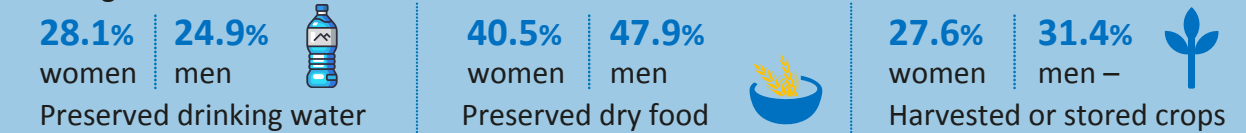
Arid lands had higher adoption of water preservation and crop protection measures.



Food preservation measures were less common in coastal areas affected by flooding and storms.

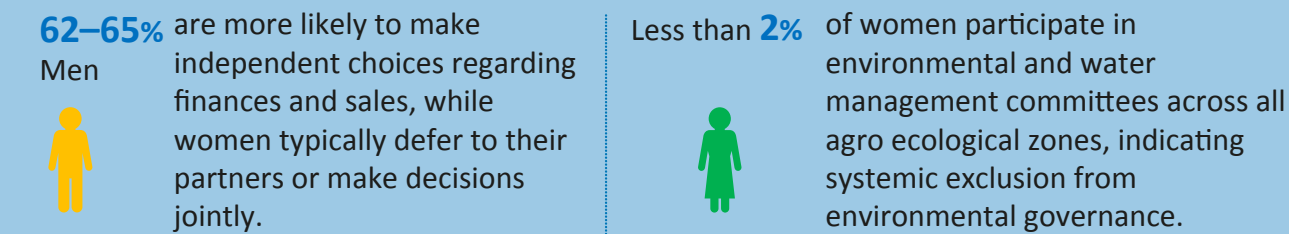


Semi arid areas recorded the highest uptake of several preservation measures due to recurrent drought.



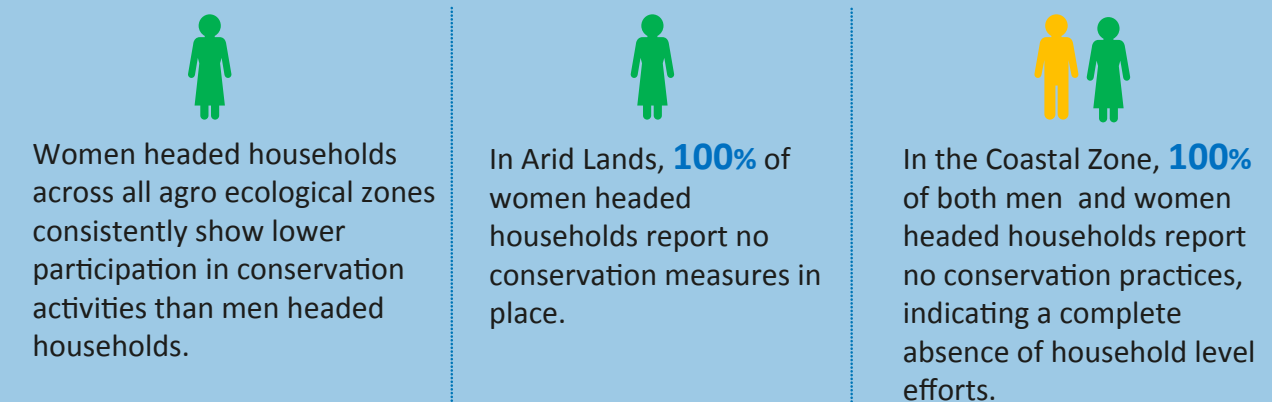
Decision-making Power

Decision making over natural resource-related livelihoods in Mainland Tanzania remains uneven and gendered.

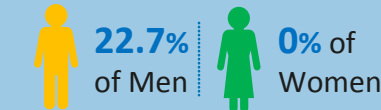


Environmental Conservation and Degradation

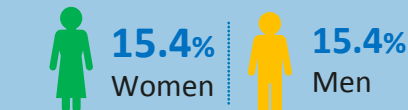
Conservation Practices



Largest gender gap in conservation: Selective harvesting in the **Alluvial Plains** of men headed households vs headed households.

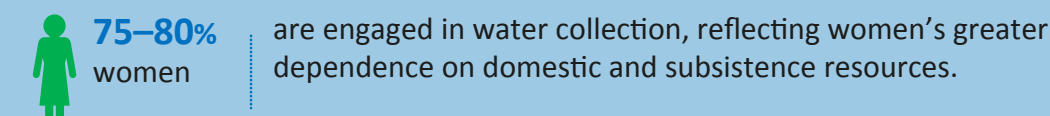


Most gender balanced conservation practice: Rotational grazing in Semi **Arid Lands** of women headed vs men headed households.

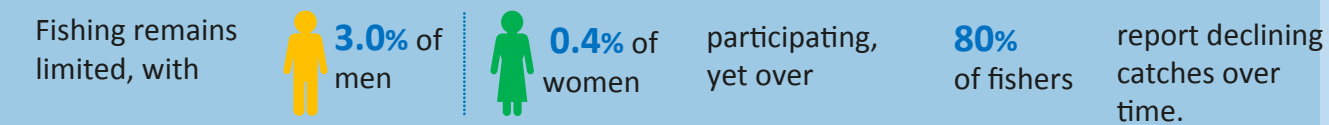
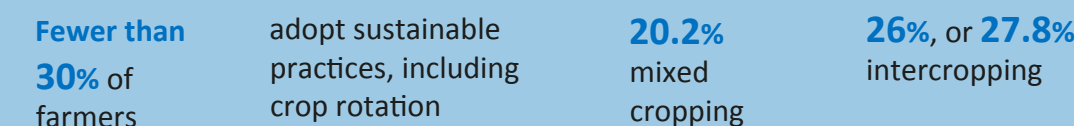
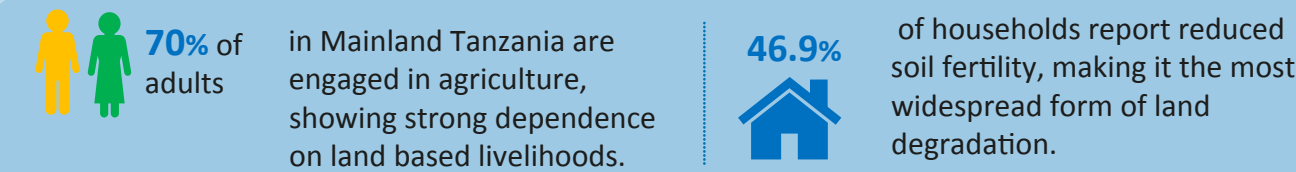


Environmental Related Livelihoods

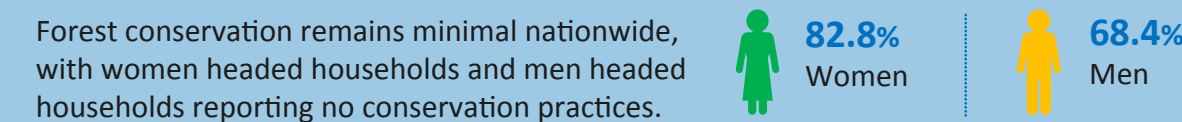
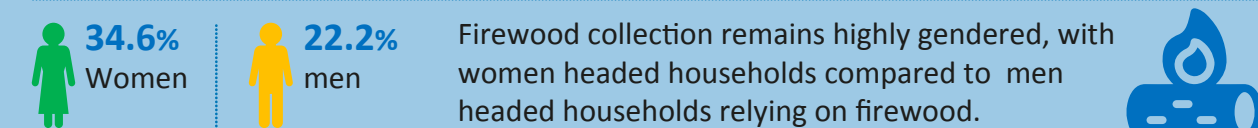
70–75% of rural households depend directly on natural resources for livelihoods



Natural Resources Related Livelihood Activities



Aquaculture adoption is extremely low, at below 0.5% nationally; men engage exclusively for commercial purposes, while women participate only for household use.



Policy Recommendations

1. Adopt mandatory intersectional impact assessments – Require gender, disability, and location equity reviews for all national policies and budgets.
2. Launch a national climate resilient housing program – Prioritize durable, low carbon housing support for women headed households in high risk areas.
3. Scale up integrated WASH–energy–housing packages – Combine clean cooking, water, sanitation, and housing improvements to reduce women's health and labour burdens.
4. Establish gender responsive disaster management units – Embed women led early warning, inclusive evacuation planning, and gender sensitive recovery.
5. Reform land and resource governance for inclusion – Ensure women's land rights and 50% representation in water, forest, and fisheries committees.
6. Create green jobs and enterprise funds for women and youth – Support skills, finance, and market access in sustainable livelihoods.
7. Expand rural clean energy and water infrastructure – Scale solar powered water systems, mini grids, and clean cooking in underserved areas.
8. Promote agro ecological zone specific agriculture and aquaculture – Tailor climate smart farming and extension services to local conditions.
9. Strengthen community based sustainable resource management – Incentivize conservation practices with women's participation and benefit sharing.
10. Invest in real time, disaggregated data systems – Improve gender and location responsive monitoring to guide targeted action.



Tanzania Gender and Environment Survey 2025



Summary of NATIONAL REPORT

